

Sl-TyPC



SAPIENZA
UNIVERSITÀ DI ROMA

Ilaria Pietrantozzi | Daniele Proietto | Simone Sbandi | Virginia Zoppi

Indice

Concept	4
Ricerca	5
Ispirazione	6
Progettazione	7
Carattere	8
Evoluzione	9

Concept

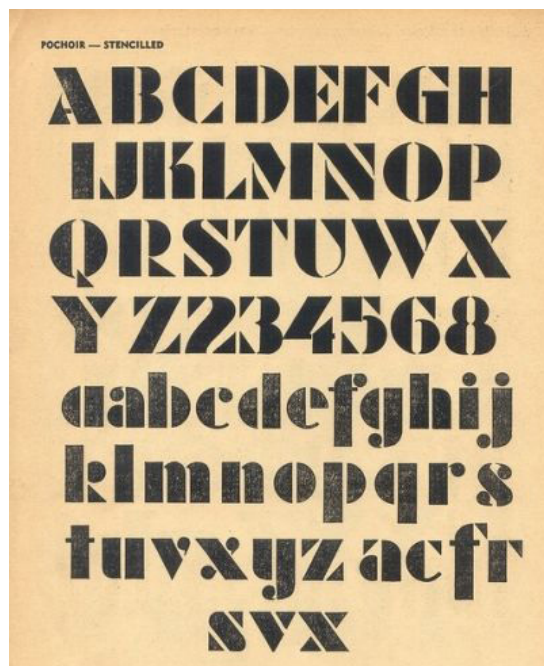


La scelta di utilizzare un carattere di tipo stencil, risiede nell'esigenza progettuale di dover inserire i nomi delle vittime del bombardamento. Si è cercata quindi una coerenza formale e stilistica nei caratteri utilizzati durante il periodo bellico di riferimento. In particolare sono stati presi in considerazione quei caratteri stencil utilizzati per indicare nomi e matricole su bombe, armi e veicoli militari americani, risalenti alla metà del '900.

Ricerca

**A A B C D E F G H I
J K L M N O P Q R
R S T U V W X Y Z**

**A B C D E F G H I J K L M
N O P Q R S T U V W X Y Z
9 8 7 - 6 5 4 - 3 2 1 0**

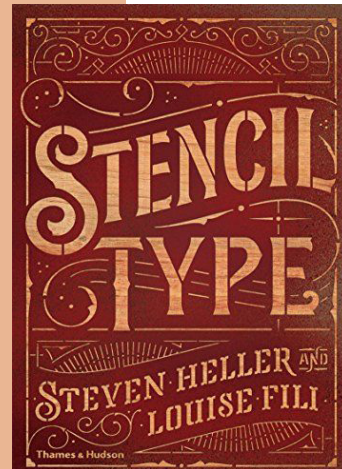


**Design Expectations
NATO FORCES
a quick brown fox jumps over the lazy dog
HEAVIER STANDARD
A QUICK BROWN FOX JUMPS OVER THE LAZY DOG
wirebound fiberboard**

**A B C D E F G H I J K L M
N O P Q R S T U V W X Y Z
0 1 2 3 4 5 6 7 8 9**

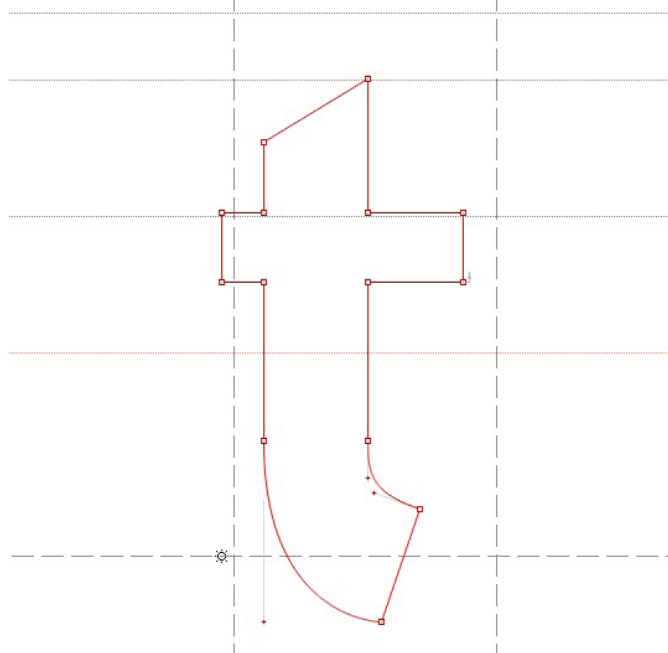
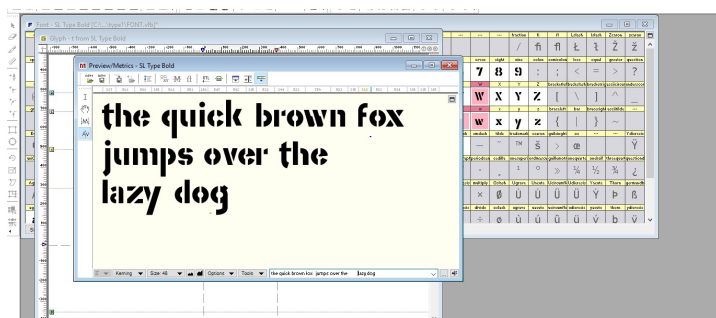
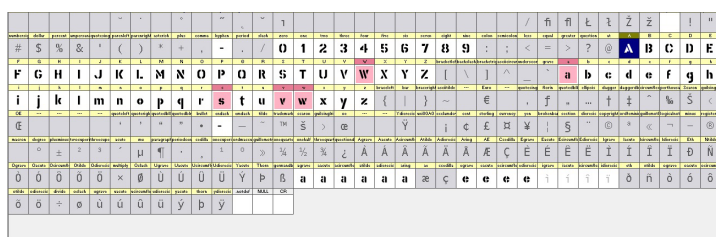
La prima fase di ricerca è stata dedicata all'analisi dei caratteri stencil esistenti. In questo modo sono state notate le numerose differenze tra un carattere e l'altro, cercando di individuare quelli che presentassero uno stile poco giocoso e lontano dal mondo western.

Ispirazione



Il carattere si ispira ad alcuni stencil per ragazzi che vennero messi sul mercato dalla Steno Lettering Co. negli anni '50 e '60. Gli stencil in questione non hanno nessun legame diretto con il tema del progetto ma il loro stile è coerente con la ricerca di un carattere sobrio.

Progettazione



La fase di progettazione si divide in diverse parti: la prima riguarda il disegno e la costruzione delle singole lettere su Illustrator; la seconda prevede la correzione della forma delle lettere, sempre utilizzando lo stesso programma; mentre nella fase successiva il carattere disegnato viene riportato su un altro programma, FontLab, dove la costruzione viene ulteriormente migliorata. L'ultima fase prevede la gestione degli spazi tra una lettera e l'altra, sempre utilizzando FontLab.

Carattere

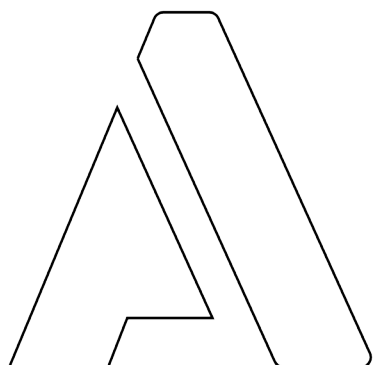
\$I.-TYPE

**ABCDEFGHIJKLMNOPQRSTUVWXYZ
abcdefghijklmnopqrstuvwxyz
1234567890**

**The quick brown
fox jumps over
the lazy dog**

Evoluzione

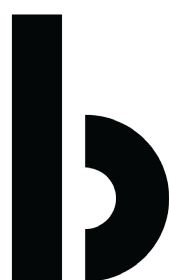
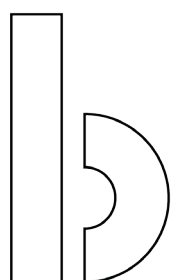
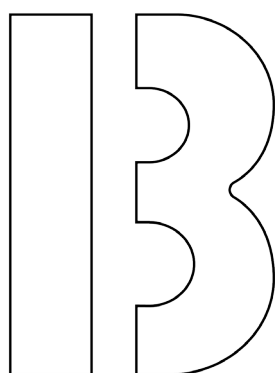
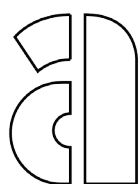
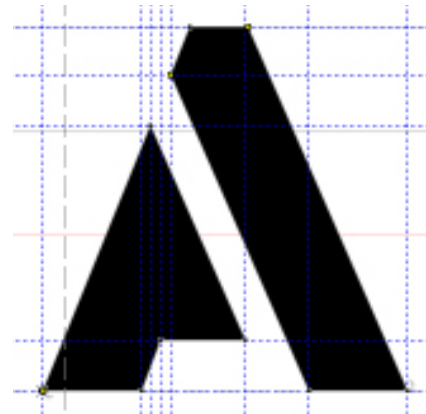
Prima prova



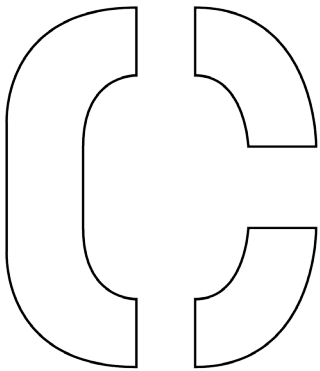
Prima correzione



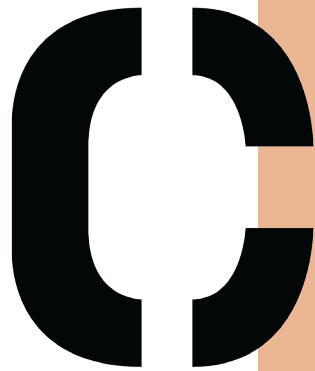
Seconda correzione



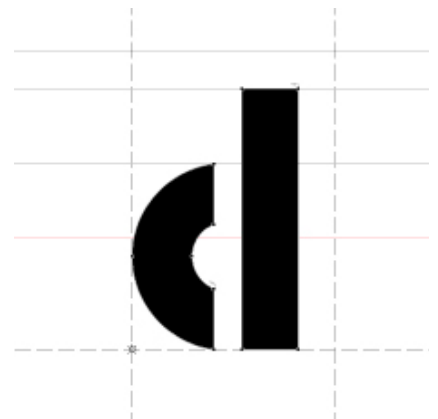
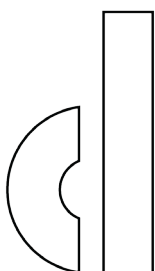
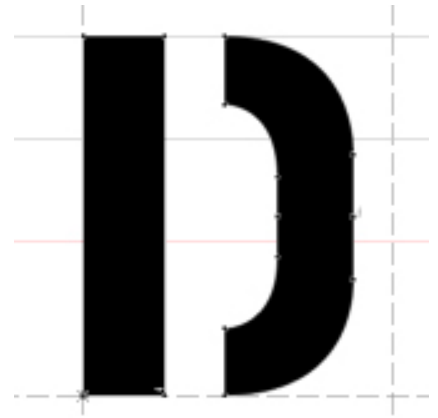
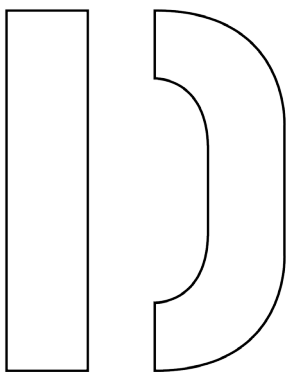
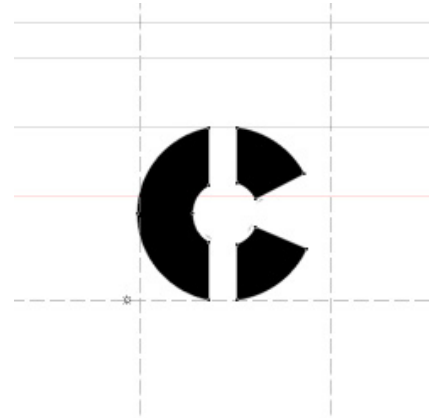
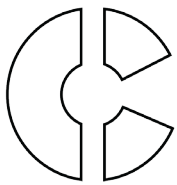
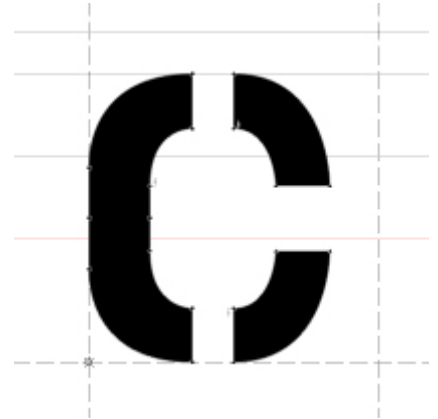
Prima prova



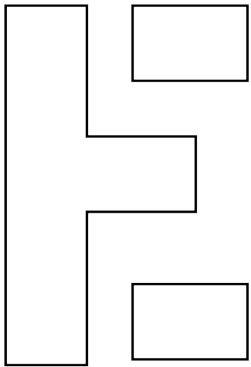
Prima correzione



Seconda correzione



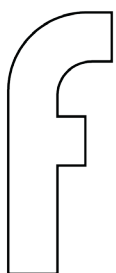
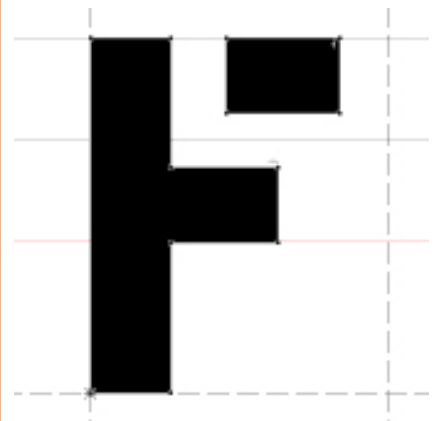
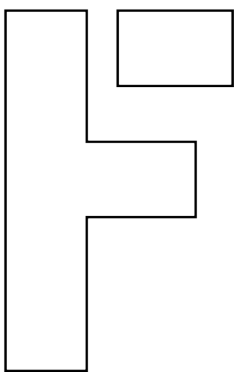
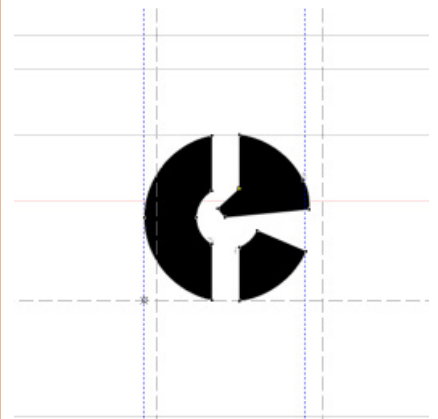
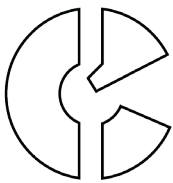
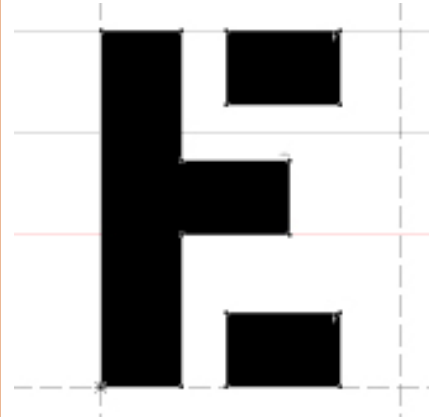
Prima prova



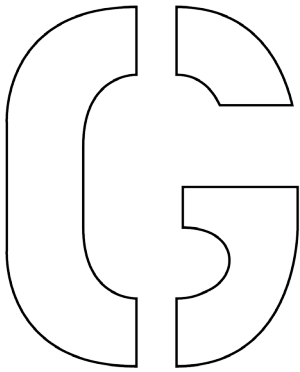
Prima correzione



Seconda correzione



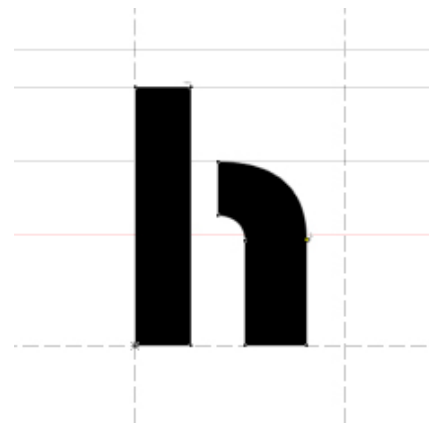
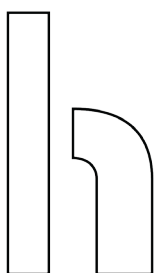
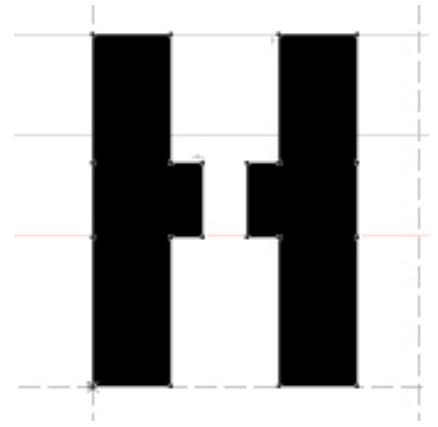
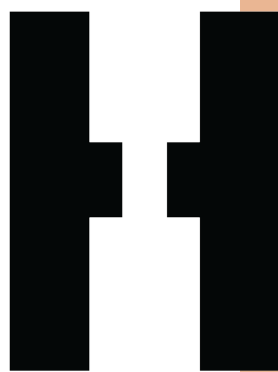
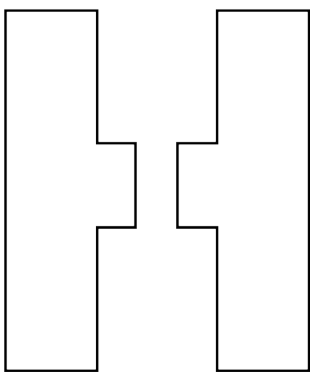
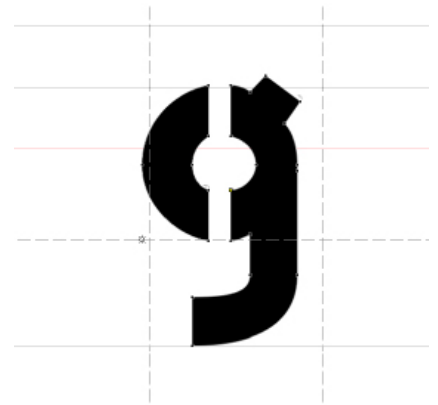
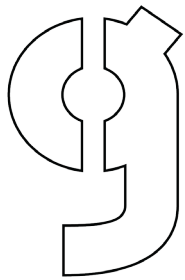
Prima prova



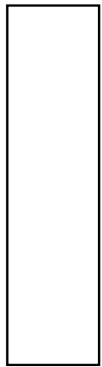
Prima correzione



Seconda correzione



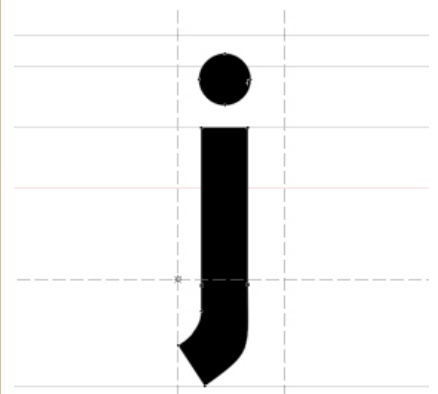
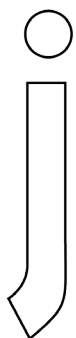
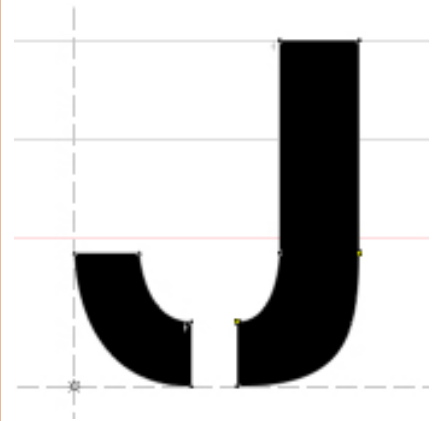
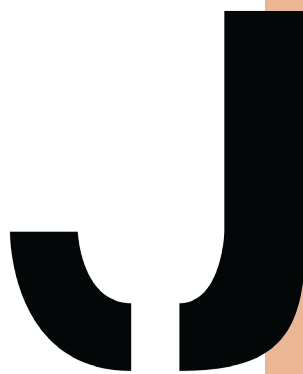
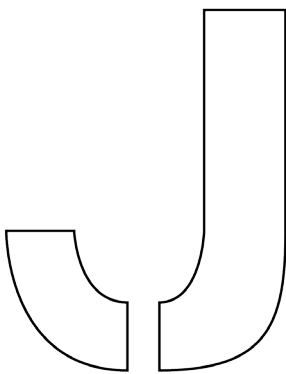
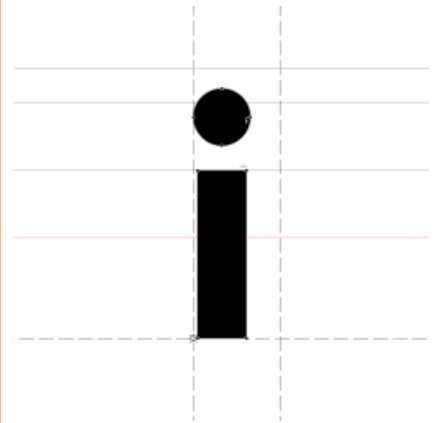
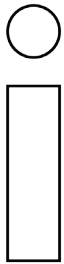
Prima prova



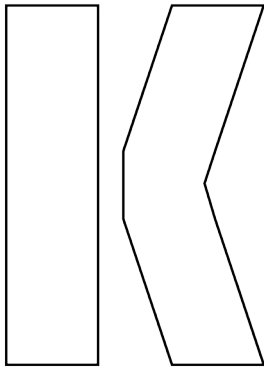
Prima correzione



Seconda correzione



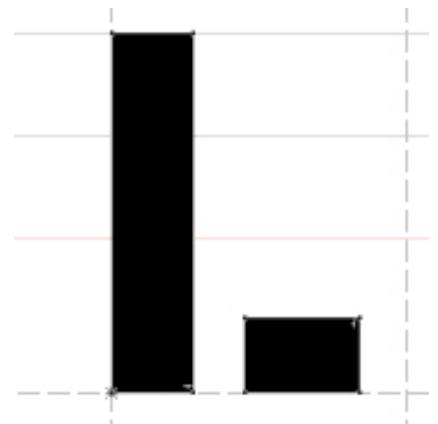
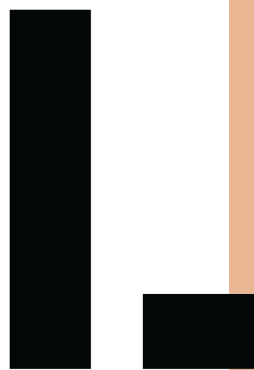
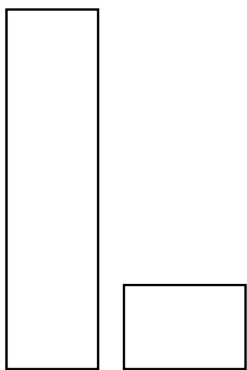
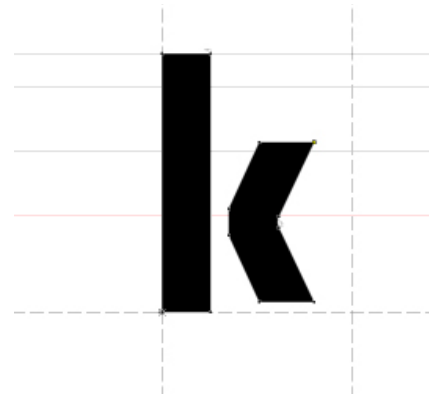
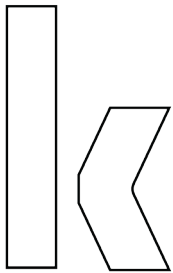
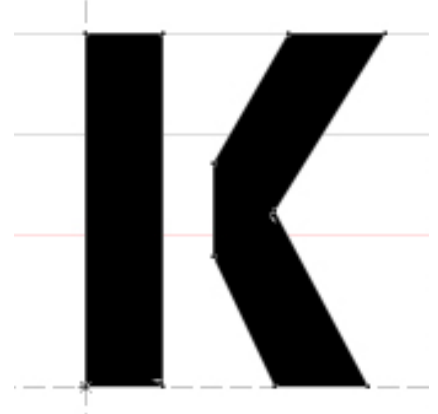
Prima prova



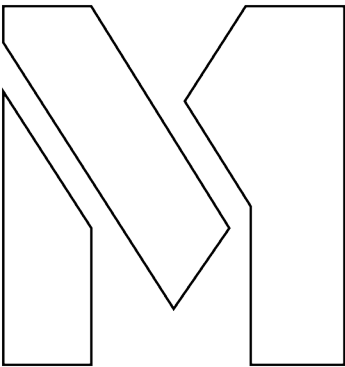
Prima correzione



Seconda correzione



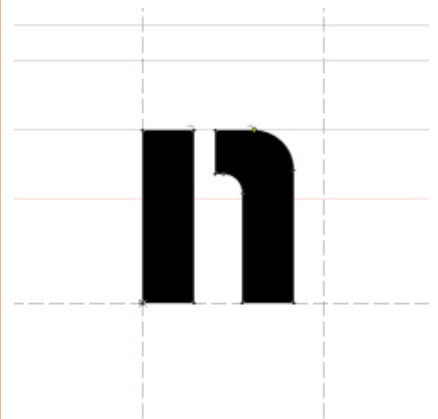
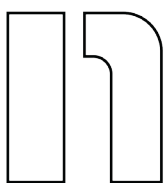
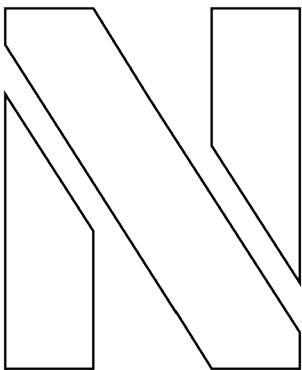
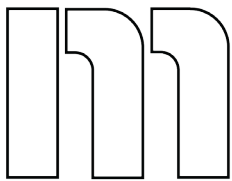
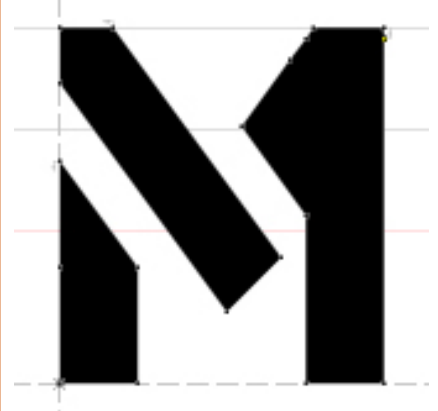
Prima prova



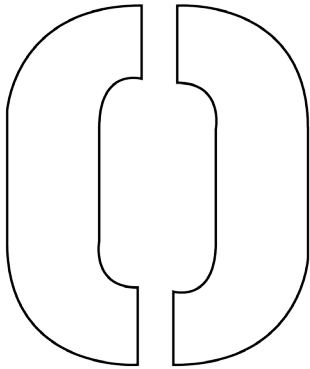
Prima correzione



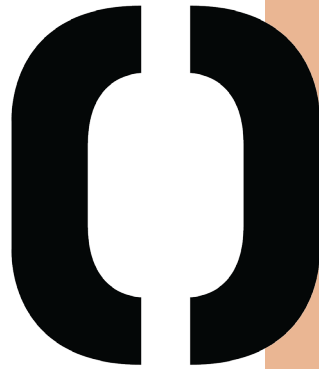
Seconda correzione



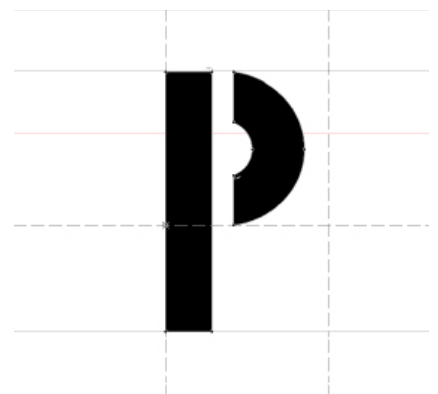
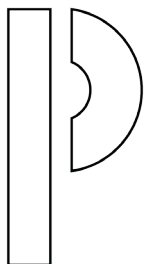
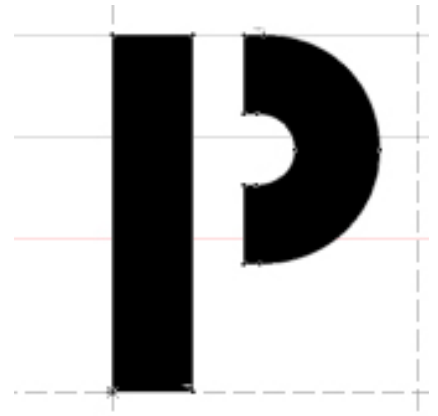
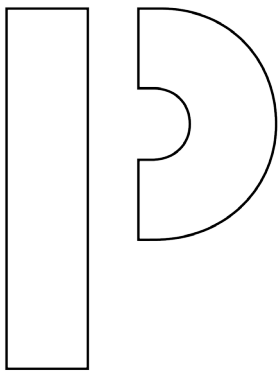
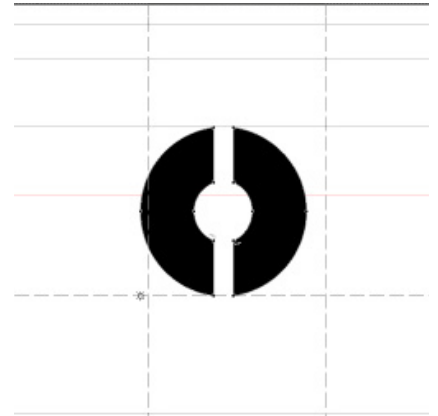
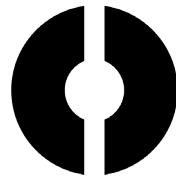
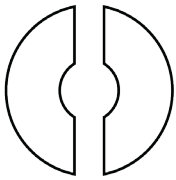
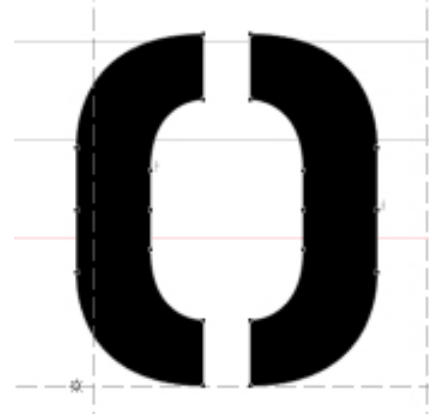
Prima prova



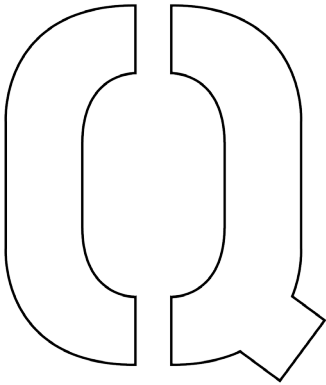
Prima correzione



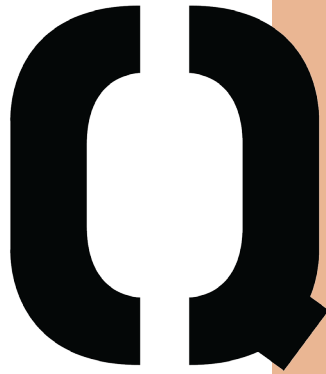
Seconda correzione



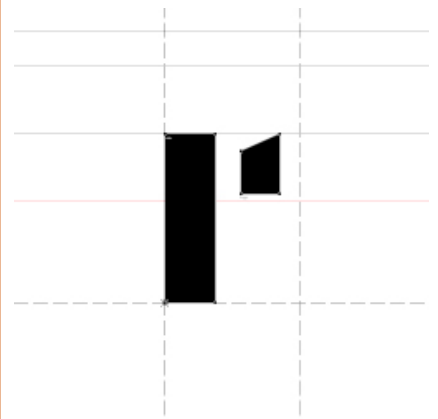
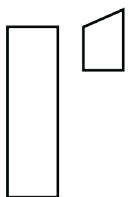
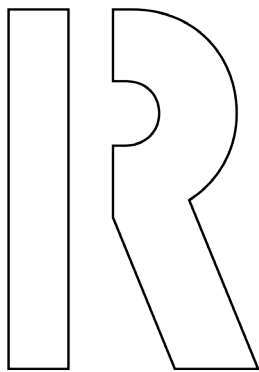
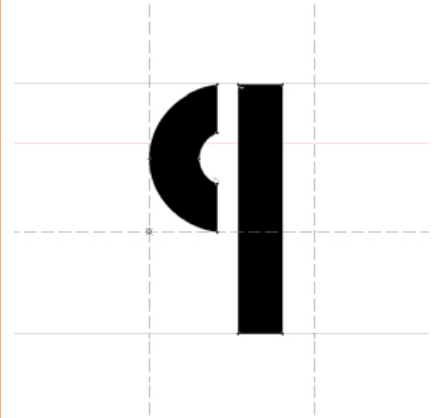
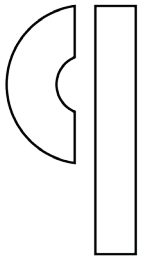
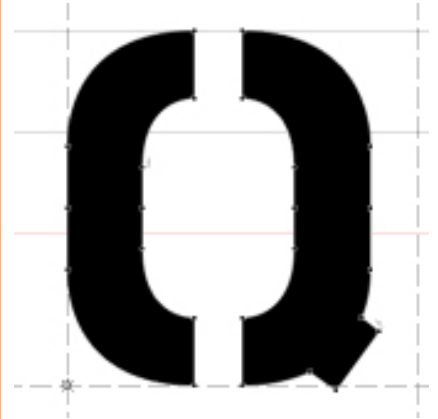
Prima prova



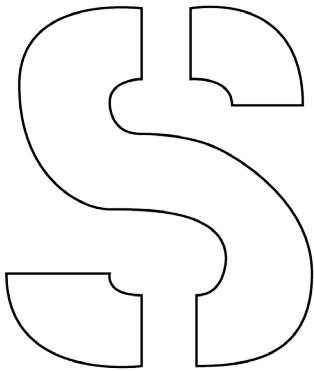
Prima correzione



Seconda correzione



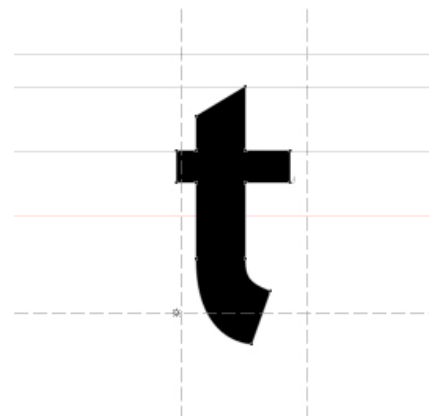
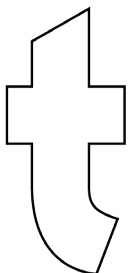
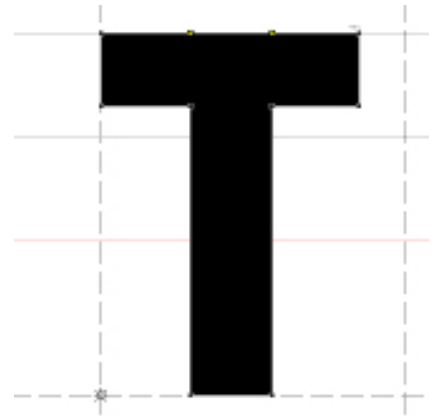
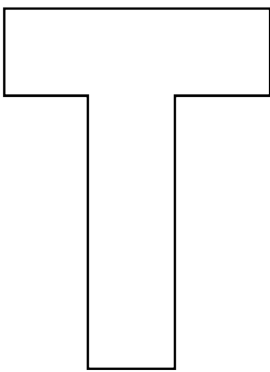
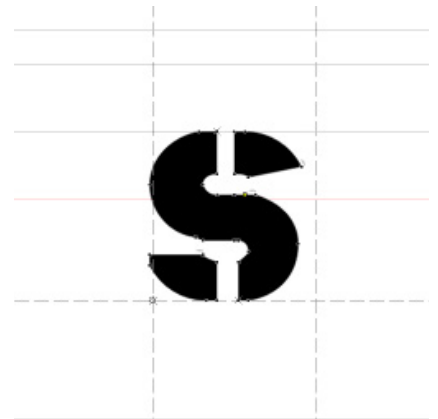
Prima prova



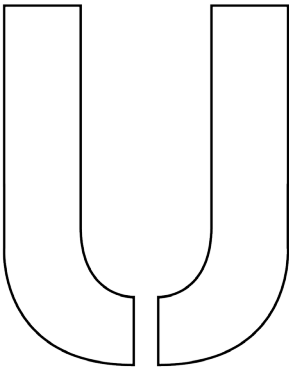
Prima correzione



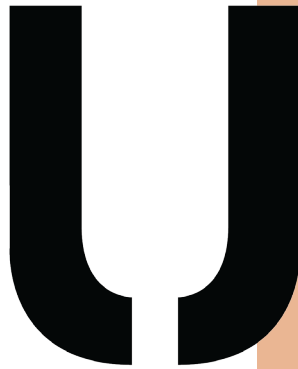
Seconda correzione



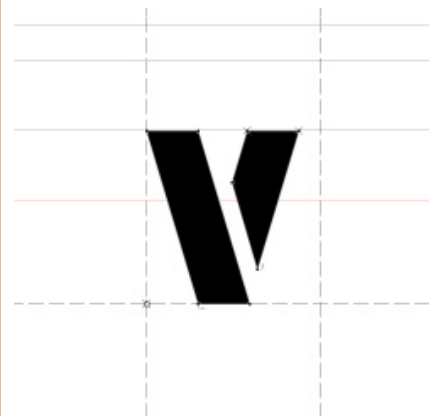
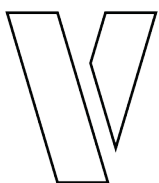
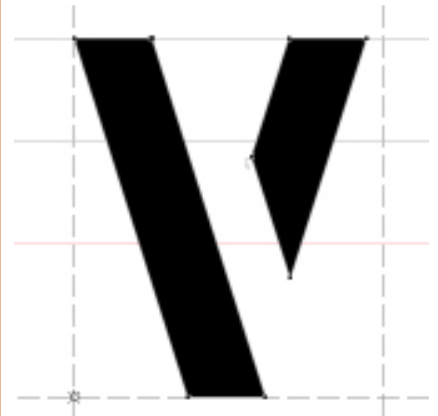
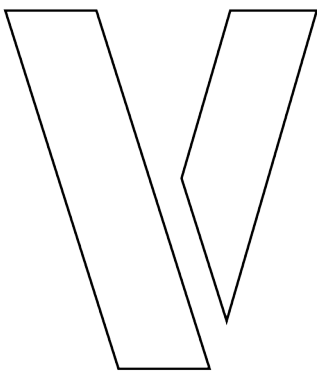
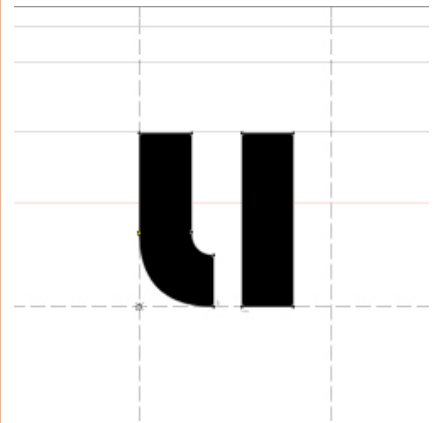
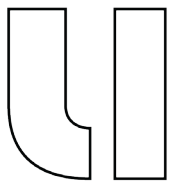
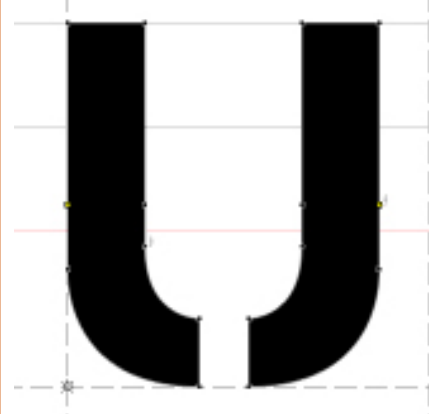
Prima prova



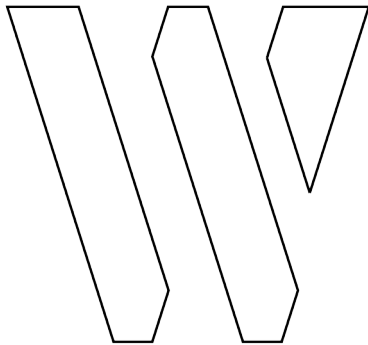
Prima correzione



Seconda correzione



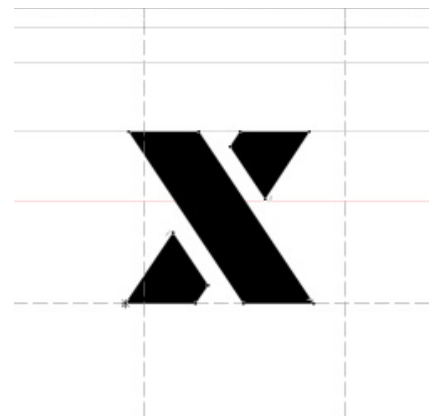
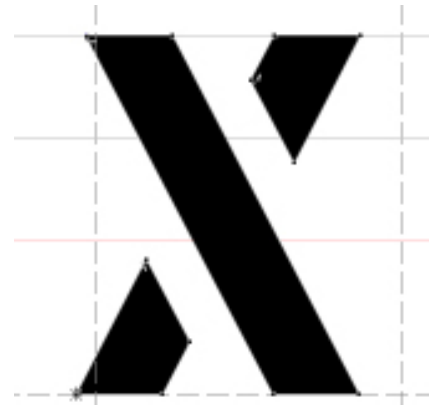
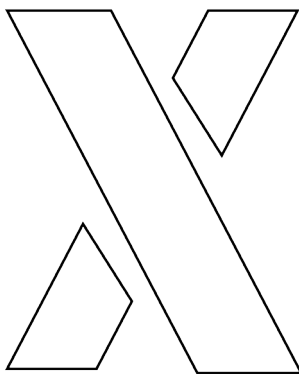
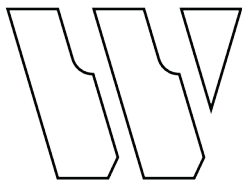
Prima prova



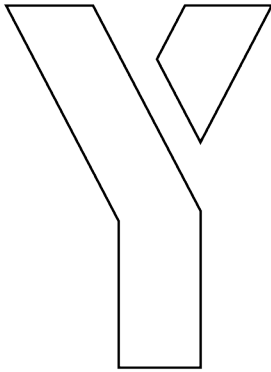
Prima correzione



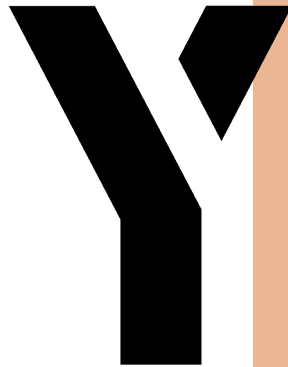
Seconda correzione



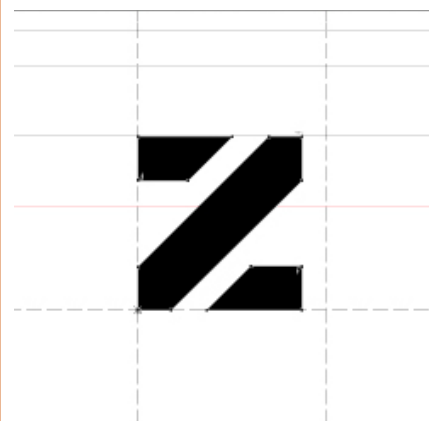
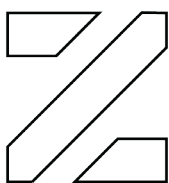
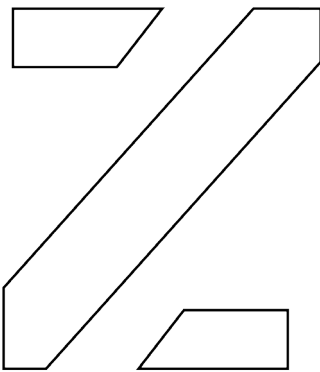
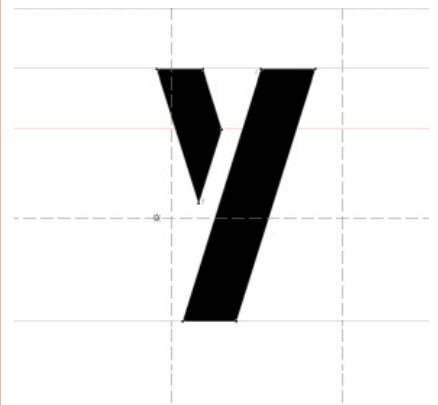
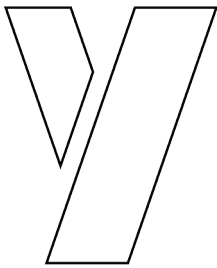
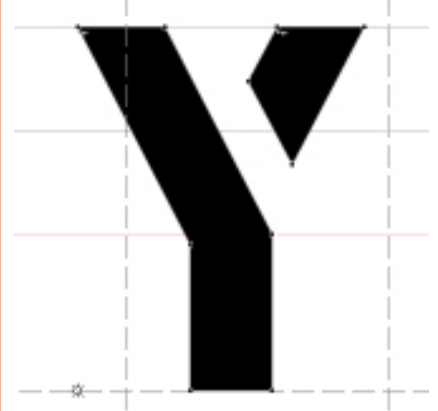
Prima prova



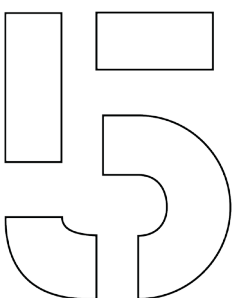
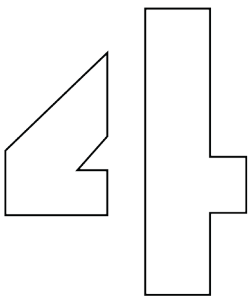
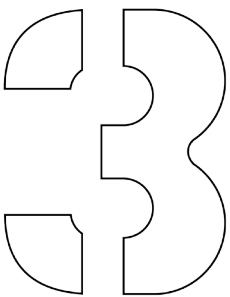
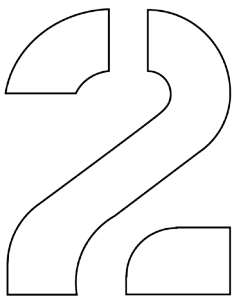
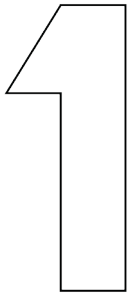
Prima correzione



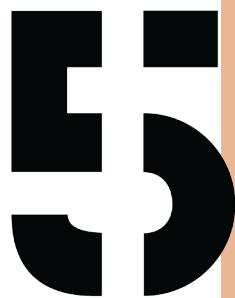
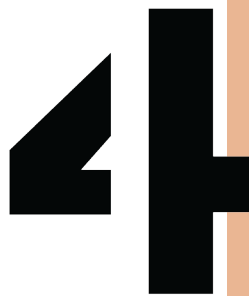
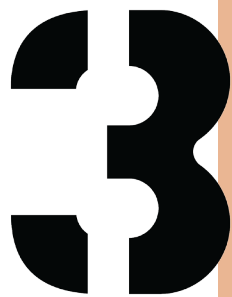
Seconda correzione



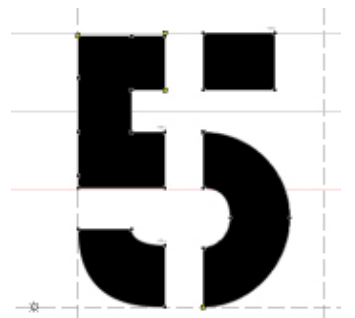
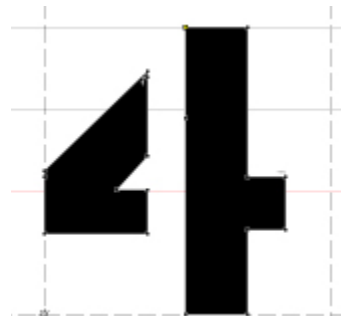
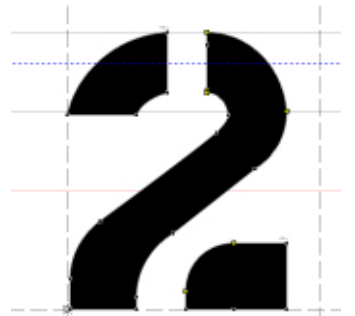
Prima prova



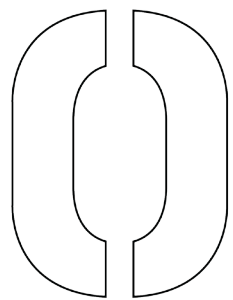
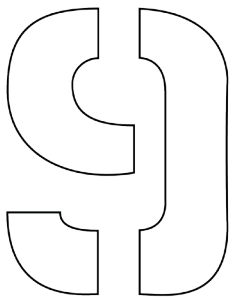
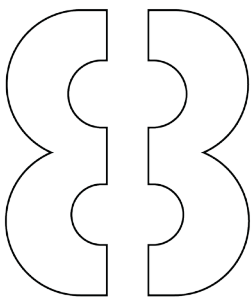
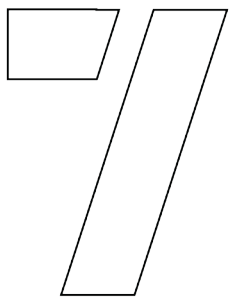
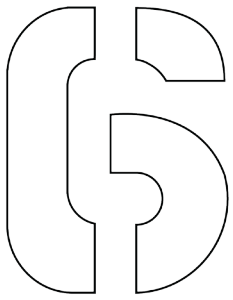
Prima correzione



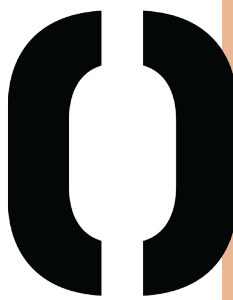
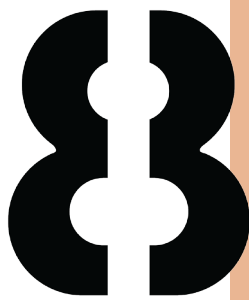
Seconda correzione



Prima prova



Prima correzione



Seconda correzione

